

Electrical Safety Edition!

PRECorp News

APRIL 2026

Solar/battery storage project to break ground soon

For the first time in Powder River Energy’s 80-year history, the cooperative will experience control of a generation resource. This change will enable PRECorp to respond to system conditions in real-time.

This month, PRECorp announced a collaboration with PowerSecure, a leading provider of resilient, innovative energy solutions; and, the National Rural Telecommunications Cooperative (NRTC), to advance a utility-scale battery energy storage and solar generation project in Moorcroft.

Named the LaBelle Prairie Project, the system is designed to help PRECorp address grid-level peak demand challenges driven by industrial growth and rural load expansion, while reducing annual power costs for its members and strengthening system reliability through added backup capacity. The system is also expected to help PRECorp reduce annual wholesale power costs by up to \$1 million, while delivering critical backup power capacity during outages and extreme conditions.

“Our value to our members, has always been, we have to be a trusted energy partner,” said PRECorp CEO Brian

Mills. “This entire project is loaded with technology and experience that will equip that very value point that the members have of our cooperative. This investment will be a big step forward in how we look to control power costs in the future.”

Mills said the work will have a three-pronged approach. The Moorcroft Substation will be upgraded with new equipment, the battery storage units will be installed, and solar panels will be erected near the PRECorp line service shop, located north of Interstate 90.

The integrated solution will include a 5MW Kore battery energy storage system with a total energy capacity of 21.6 MWh and 1.25 MWdc of ground-mount solar generation, providing greater operational flexibility and supporting improved peak demand management. The project cost of \$23.5 million is supported by a Federal loan program and tax credits, with PRECorp’s share as low as \$11.4 million. PRECorp expects the power cost savings of \$1 million each year will accelerate the payback of the project.

“At PowerSecure, we believe in a strong ‘say-do’ culture

Continued on page 3...

Follow us on these social media channels:



Listen to our podcast at:



In This Issue:

CEO Straight Talk

Electrical Safety

Member discounts

Calendar of events

Tree trimming basics

#ThankALineworker



BRIAN MILLS,
CEO

Telephone Townhall meeting Wednesday, May 20

Plan to join me on Wednesday, May 20, for an important Telephone Town Hall with the PRE-Corp membership. I will be joined by a special guest as we share some insights on PRECorp's current activities and answer your questions about the cooperative and our service. We will call PRECorp members at 6:30 p.m. to start the call. Also, join us on Facebook live, or dial toll free 888-886-6602 to participate via phone.

Understanding Your Power Bill: The Four Parts Behind the Price

Let's go back in time...oh...about 80 years. Homesteaders in this area were just learning about the possibility of having electricity come to their respective homesteads. At that time...it would take \$5 a month (estimated equivalent to \$90/month today) plus the electricity they used. You can imagine sitting by the fire or candlelight contemplating adding a new cost into your operation and the give and take to make it happen. For the same amount on an annual basis, you could buy another 40 acres. "Oh...what should we do..." But it was a game changer...and as folks started joining the cooperative, the quality-of-life enhancement and efficiencies which it provided were self-evident. Because of the newness, everyone was intimately aware of when a light bulb or the electric clothes washer were used.

Fast forward 80 years...electricity has become a necessity...and it is unfathomable how we would exist without it. Compare how much consideration a power bill would receive yesterday to today. Our consumption and usage patterns have been muted by the essentiality of electricity. In fact, the PRECorp Team takes pride in keeping the system running in a way that does not interrupt your lifestyle and/or operation. But the energy landscape is changing in this country, and folks are starting to become more and more aware of and interested in their respective energy consumption...and rightfully so, as the cost of generating electricity is starting to grab our attention...let alone the cost to deliver it to your homes and businesses. So... the challenge is presented...how does a member's own energy usage stewardship translate to their monthly power bill?

Last month I provided a summary overview of the larger initiatives on which we are working. To be fair, it was a little bit technical and most are not in direct sight of and value to a typical member. But there is one initiative that will directly impact every member and help meet the challenge mentioned above. The Rate Re-Design Initiative will ultimately

provide you with the visibility into what drives the costs that make up your power bill and the rates you pay.

As your electric cooperative, you have asked us to gather up the roughly 12,000 members' expected electricity consumption and purchase it at "bulk price" and then deliver it to you at a fair, per member cost. Purchasing power is one of the fundamental economies of scale this cooperative provides, and it takes up roughly 70-75% of every dollar you send in. In that amount, there is a sizable portion of the power bill tied to the usage profile of each member that we have averaged out and assumed as we make our power purchase. It is in that usage pattern where we look to provide back to you the means to control your electric bill. Grab a cup of coffee and stick with me on this one.

To understand where we are headed, it first helps to understand where the costs come from. That means taking a closer look at how our wholesale power supplier, Basin Electric, charges us for the power we purchase on your behalf, which puts more definition into the components that PRECorp has in distributing your energy. Each of those cost drivers play a distinct role that the new rate design is built around.

The first is your **Monthly Service Fee** (a PRECorp factor) — a fixed cost that covers the fundamental expense of being connected to and served by the system. This is another area where a cooperative's economies of scale work for the greater good providing for equipment, labor, and financed money needed to operate the business. Let's say one tractor can service up to 500 acres. Whether you have 5 or 100 acres ... at least one tractor is needed. So rather than everyone paying for a tractor individually, we group together and share the respective cost of owning a tractor. That's similar to system-wide costs. You are paying for the ability to be served — nothing more, nothing less.

Continued on page 4...

Medora discounts return for 2026

Because of a Touchstone Energy sponsorship, PRECorp members can enjoy discounts at the Theodore Roosevelt themed attractions in Medora, N.D.

Just use the code "TOUCH2026" for a 15% discount off Medora Musical tickets, Pitchfork Steak Fondue, Bully Pulpit Golf Course, Gospel Brunch tickets, Old Town Theater shows and lodging at all Theodore Roosevelt Medora Foundation properties (Badlands Motel, Elkhorn Quarters, Rough Riders Hotel and Medora Campground).

This code is good for reservations by phone, website or in-person. Green fees discount will be applied at check-in for tee time.

Go to <https://medora.com/do/> for details.

LaBelle project...

from page 1

— delivering resilient energy solutions that fuel growth and opportunity for the customers and communities we are privileged to serve," said Jim Smith, President of PowerSecure. "We are proud to support PRECorp as it addresses growing demand and peak load challenges with an integrated storage-and-solar solution."

PRECorp officials are applying for permits from Crook County and the Wyoming Public Service Commission. "What you'll end up seeing out there - once we get the permits in place - is construction work later this summer. It will begin with some dirt work around the substation and then battery containers, and solar panels will follow after the initial site work has been completed," Mills said.

Designed to meet the challenges of rising energy demand, the project will showcase PowerSecure's effort to deliver resilient, future-ready energy solutions for rural utilities. The project is expected to take approximately two years, with the system targeted to be operational in 2027.

For more information call PRECorp at 1-800-442-3630, or participate in the May 20 Telephone Town Hall meeting with CEO Brian Mills.

WIRED FOR SERVICE.

We thank the entire
PRECorp System
Operations team for
their commitment to
powering our local
communities.

PHOTO: PRECorp linemen restore power after a 2026 wind storm in Campbell County.

LINEWORKER APPRECIATION DAY

APRIL 18, 2026



CEO Straight Talk... from page 3

The second component is the **Energy Charge** (a Basin factor) — the per-kilowatt-hour cost based on the amount of electricity you consume. Because we are unbundling the rate, we do not try to collect the other cost variables in the per kwh you use. This rate design simply passes the cost of the electron straight through (in the tractor analogy, this is the fuel the tractor uses to farm your acres). So... the per kwh cost will go down and the other costs will be billed separately. Keep reading to understand how.

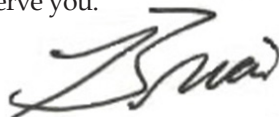
The third piece is what we call your **Peak Hour Charge — or Non-Coincident Peak Demand** (a PRECorp factor). This reflects your own individual highest 30-minute interval of use during the month. Picture a chilly morning when the coffee pot, the furnace blower, the shop heater, and the water heater all kick on at the same time. The maximum load request you require at any one point. Back to the tractor analogy...how many fuel trucks and other resources do we need to have on standby for you to farm your acres the way you want them farmed? Do you want them all to be farmed in 15 minutes or are you good with a slower pace. Essentially, the infrastructure to manage your personal peak must be built and maintained — and the peak hour charge reflects that cost. Simple steps like staggering your big appliances — not running the oven, dryer, and water heater all at once — can bring this number down in a very real way.

The fourth and final component is the **System Peak Charge or Coincident Peak Demand** (a Basin factor). This one is perhaps the most important to understand, because it affects us all together. How many tractors and how much infrastructure did we need to farm everyone's acres just as they wanted? It's based on your contribution to the entire PRECorp system's single highest 30-minute window each month — that timeframe when everyone across our territory is drawing the most power simultaneously. Approximately 40% of what we pay Basin Electric is tied to this one number... and right now, that cost is apportioned into the per kwh cost using cooperative-wide averages so it is hard for you to see it.. That is exactly what we are working toward changing.

The goal is that once you can see each of these four charges, you can then deploy strategies and tools to manage them. We will be working on a program to test-pilot this structure with a select group of members before any system-wide rollout. Timing-wise, the pilot program will be later this year. Should we decide to continue this program member-wide, it wouldn't be before the end of 2027-early 2028. As you can imagine, this is going to be more about how we communicate and equip you as members to understand and manage your usage than it is having a refined finished product.

I am also profoundly grateful to the PRECorp Team who work diligently behind the scenes on your behalf to meet the energy challenges that come our way. It is our honor to serve you.

Powder River, Let 'er Buck,



Calendar:

The list of PRECorp events includes Board meeting dates, holidays, telephone town hall meetings, and more.

- **Tuesday, April 21** - PRECorp Board of Directors meeting, 9:30 a.m., Sundance.
- **Tuesday, April 28** - PRECorp Foundation Board of Directors meeting, 9 a.m., Gillette.
- **Tuesday, May 19** - PRECorp Board of Directors meeting, 9:30 a.m., Gillette.
- **Wednesday, May 20** - Telephone Town Hall meeting with CEO Brian Mills, 6:30 p.m.
- **Friday, May 22**: Deadline for nominating committees to post their list of candidates.
- **Monday, May 25**: Memorial Day, PRECorp offices closed.
- **Tuesday, May 26** - PRECorp Foundation Board of Directors meeting, 9 a.m., teleconference.
- **Saturday, June 6**: 25th Durham Ranch Buffalo Stampede 5k/10k, 7:30 a.m.
- **Friday, June 12**: Deadline to file Director nominating petitions at a PRECorp business office.
- **Tuesday, June 16** - PRECorp Board of Directors meeting, 9 a.m., Sheridan.
- **Tuesday, June 23**: PRECorp Foundation Board meeting, 9 a.m. Gillette.
- **Friday, July 3**: Independence Day observance, PRECorp offices closed.
- **Wednesday, July 15**: Meet the Candidate Telephone Town Hall; Publication of director candidates, notice of Annual Meeting, mail-in ballot, and Annual Report.
- **Tuesday, July 21**: PRECorp Board meeting, 9:30 a.m. teleconference.
- **Tuesday, July 21**: PRECorp Foundation Board meeting, 9 a.m. teleconference.
- **Wednesday, August 5** - PRECorp Rally Wednesday Taco Booth fundraiser, 11 a.m., downtown Sundance.
- **Tuesday, August 18** - PRECorp Board of Directors meeting, 9:30 a.m., Gillette.
- **Saturday, August 22**: PRECorp Annual Membership Meeting, Buffalo High School.
- **Tuesday, August 25** - PRECorp Foundation Board of Directors meeting, 9 a.m., Gillette.
- **Monday, September 7**: Labor Day holiday, PRECorp offices closed.

May is Electrical Safety Month

May is National Electrical Safety Month. But at PRECorp, safety is a daily emphasis, throughout our system, all year long - at work and at home.

Because we are looking out for the best interests of our members, we raise awareness about safety and ways to avoid accidents, keep our employees safe, and provide reliable service for our members.



Although you don't see the actual electricity flowing through the line, you would certainly feel it if you had an encounter with electricity. Touching lines or equipment with high voltages can not

only cause injury, it can take a life.

However, safety concerns stretch beyond the immediate tasks of climbing poles and restoring power. We must consider safety in all aspects of our day.

People have accidentally driven vehicles and large

equipment into power poles and overhead lines. Diggers sometimes discover too late they have hit power cables buried underground.

Animals and even tiny insects are also in the picture. These creatures find ideal hangouts on our power lines, cross arms, insulators, and other attachments. Bugs hide in the tight spaces in the guards and insulators, and birds daringly try to root them out. The resulting electrocutions of the predators can knock out power or cause a fire.

Vines, trees, and bushes tend to grow quickly into our lines. Keeping vegetation trimmed and away from the poles, power lines, and other electrical equipment takes regular maintenance. Fires can start when lightning hits a pole, or wind slaps power lines together. It does not take much of a spark on dry grass or timber for high winds to push a fire several miles across open Wyoming countryside.

Are there some hazards around power services to your residence, ranch, or business that could result in a tragedy? If you notice potential hazards involving PRECorp facilities, call 1-800-442-3630, to report the facility location and nature of the problem.

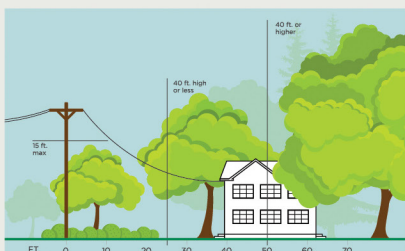
Continued on pages 6-7...

3 Ways to Help Limit Tree Trimming

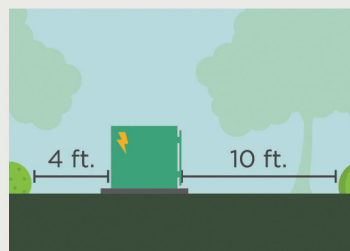
Did you know electric utilities are required to trim trees and other types of vegetation that grow too close to overhead power lines? We know you love your trees, and we will do everything we can to avoid trimming them.

Here's how you can help:

1. Plant trees in the right place. Trees that will be <40 ft. should be planted at least 25 ft. away from power lines (>40ft. should be at least 50 ft. away).



2. Don't block pad-mounted transformers. Plant shrubs at least 10 ft. away from transformer doors and 4 ft. from transformer sides.



3. Report dangerous branches. If you spot a tree or branch that is dangerously close to power lines, please let us know.



Electrical Safety Month...

from page 5.

In the home (also see page 8)

Because of the higher loads of the newer electric devices, demand for energy can overburden an older home's electrical system.

Some tips:

- Make sure entertainment centers and computer equipment have plenty of space around them for ventilation.
- Use extension cords as a temporary solution, and never as a permanent power supply.
- Do not place extension cords in high traffic areas, under carpets, or across walkways, where they pose a potential tripping hazard. Heat from the cord can also be trapped and cause a fire.
- Use a surge protector to protect your computer and other electronic equipment from damage caused by voltage changes. This equipment is designed to break so be prepared to change them frequently.
- The wattage of the bulbs you use in your home should match the wattage indicated on the light fixture. Overheated fixtures can lead to a fire.
- Keep all liquids away from electrical items such as televisions and computers.
- Heavy reliance on power strips is an indication that

you have too few outlets to address your needs. Have additional outlets installed by a qualified, licensed electrician.

- Check refrigerator coils quarterly to eliminate dirt buildup. This can increase efficiency and remove fire hazards.
- Ensure all countertop appliances are located away from the sink. GFCI outlets are required in kitchens, bathrooms, and outdoors. These outlets weaken and fail over time, so know when to replace them.
- All appliance cords should be placed away from hot surfaces. Pay particular attention to cords around toasters, ovens, and ranges. Cords can be damaged by excess heat.



And remember fire safety:



- The top and the area above the cooking range should be free of combustibles, such as potholders and plastic utensils. Storing these items on or near the range may result in fires or burns. Range hood filters also need to be replaced regularly.
- Nearly two-thirds of fire deaths result from fires in homes without working smoke alarms. Smoke alarms should be located on every level of your home, inside each bedroom and outside each sleeping area.
- Test smoke alarms every month. Batteries - even in the hard-wired models - should be replaced every six months, and remember smoke alarms have a limited life expectancy.
- Consider installing a carbon monoxide detector.
- Clean your dryer filter with each use, and check the dryer vent periodically for lint buildup. It can be a fire hazard.
- Talk to your family - including small children - on planning an emergency escape route - they are more likely to remember a plan they help create.

Continued on page 7...

Electrical Safety... from page 6.

Outdoor hazards

- Do not attach anything to a power pole. Nails, tacks, staples, wires, satellite dishes, deer stands, basketball hoops, signs, and other items create immediate hazards for you and our crews if they need to respond to an outage. (Wyoming law also considers this trespassing.)
- Be aware of clearances with your vehicles, equipment, or roof work. Look up. Look all around you to make sure you are at least 15-feet from a pole or overhead line. A few seconds to look can save you the aggravation of an accident or power outage.
- Do not plant, build, pile or stack anything beneath a power line or next to a padmount transformer.
- Look up. Carefully check the location of all overhead wires before using a ladder. All ladders that touch

power lines - even ladders made of wood - can shock or electrocute people touching them.

- (Right) Call 811 or 1-800-849-2476 (One Call of Wyoming) at least two business days before you dig. Make sure locates

are completed. Because of landscaping or erosion, lines could be close enough to the surface that you could hit them with that first plunge of the shovel. The service is free in some cases. Repairs are not.


- Heed the warning signs posted on PRECorp electrical facilities.
- Check for weather damage around your home, ranch, or business.
- If you encounter a damaged power pole or line, always assume it is energized. Do not touch or try to move downed power lines.
- Stay in your vehicle if you hit a power pole or power line.
- If you must get out of the vehicle, keep both feet together and jump clear. Do not step onto the ground while touching your vehicle.
- If you happen upon an accident involving a pad-mount transformer (that green box), power pole, or line, call 911 immediately. Do not approach the scene because electricity from energized lines can kill you, even if you are several yards away.

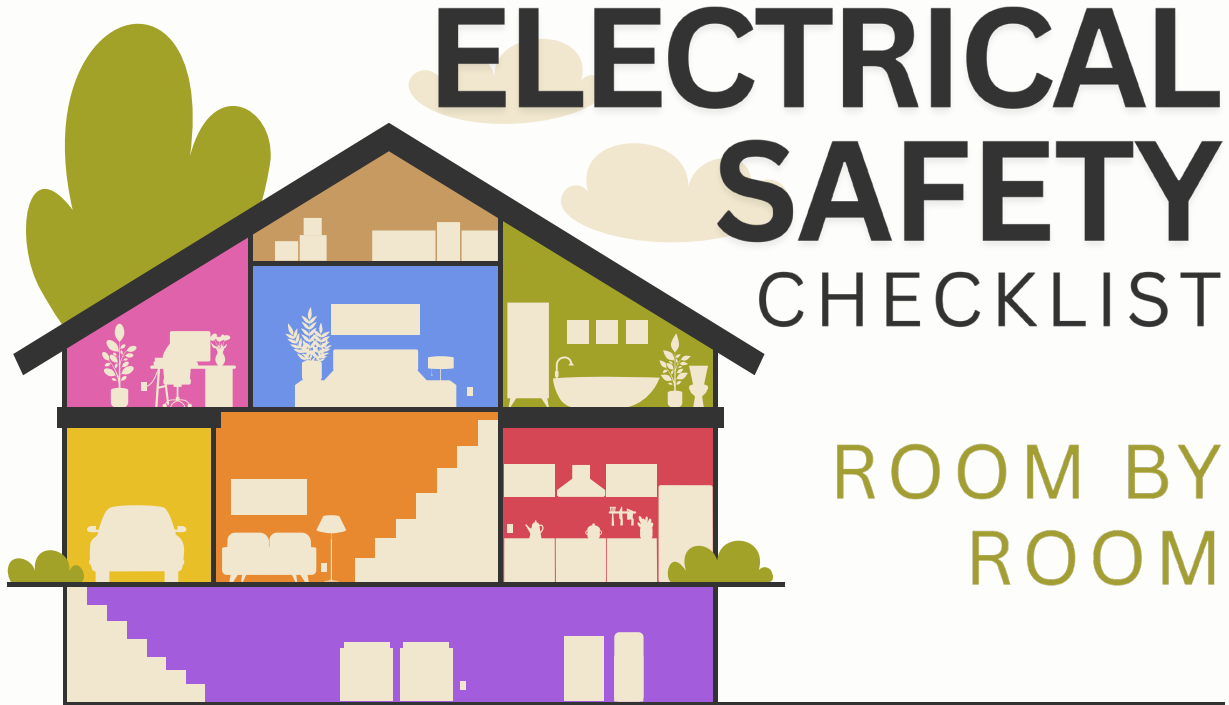
ELECTRICAL SAFETY DO'S AND DON'TS

DON'T:



Overload outlets with too many devices.

 <p>Know what's below. Call before you dig.</p> <div style="border: 1px solid black; padding: 5px; margin: 10px 0;"> <p>STARTING A NEW PROJECT?</p> <p>Here are 5 steps for safe digging.</p> </div>	<div style="background-color: #008000; color: white; border-radius: 50%; width: 40px; height: 40px; margin: 0 auto; display: flex; align-items: center; justify-content: center;">1</div> <p>NOTIFY</p>  <p>Call 811 or make a request online two to three days before you plan to start your project.</p> 
<div style="background-color: #008000; color: white; border-radius: 50%; width: 40px; height: 40px; margin: 0 auto; display: flex; align-items: center; justify-content: center;">2</div> <p>WAIT</p>  <p>Wait two to three days for a response to your request. Affected utilities will mark underground lines.</p>	<div style="background-color: #008000; color: white; border-radius: 50%; width: 40px; height: 40px; margin: 0 auto; display: flex; align-items: center; justify-content: center;">3</div> <p>CONFIRM</p>  <p>Confirm that all affected utilities have responded by comparing the markers to the list of utilities the 811 call center notified.</p>
<div style="background-color: #008000; color: white; border-radius: 50%; width: 40px; height: 40px; margin: 0 auto; display: flex; align-items: center; justify-content: center;">4</div> <p>RESPECT</p>  <p>Respect the markers and use them as a guide for the duration your project.</p>	<div style="background-color: #008000; color: white; border-radius: 50%; width: 40px; height: 40px; margin: 0 auto; display: flex; align-items: center; justify-content: center;">5</div> <p>DIG CAREFULLY</p>  <p>If you can't avoid digging near the provided markers, consider moving your project.</p>



Check these monthly to keep your home and family safe.

Kitchen

- Clean refrigerator coils and allow space for airflow.
- Store and use appliances away from the sink.
- Use and test GFCI outlets.
- Inspect cords for cracks or frays.
- Keep cords off counters; unplug when not in use.

Bedroom

- Place and test smoke and CO detectors on every level and near sleeping areas.
- Keep cords out from under rugs or furniture.
- Unplug devices and chargers when not in use.
- Make sure lightbulbs are the correct wattage.
- Plug window AC units into a dedicated circuit.

Basement

- Ensure washer and dryer are stable and ventilated.
- Remove dryer lint after each use.
- Set water heater to 120°F or lower.
- Have furnace inspected and confirm proper ventilation.

Bathroom

- Keep appliances away from water (sink, toilet, tub, shower).
- Unplug appliances when not in use.
- Use and test GFCI outlets.

Living Room

- Use safety caps on unused outlets, especially if children or pets are present.
- Ensure electronics have space for airflow.
- Replace cracked light switch or outlet covers.
- Avoid overloading outlets, power strips and surge protectors.

Garage

- Use and test GFCI outlets.
- Inspect cords for cracks or damage.
- Unplug tools and appliances when not in use.
- Place garage refrigerators/freezers on dedicated appliance circuits.

Learn more at: SafeElectricity.org



Regular business: 1-800-442-3630

Report an outage: 1-888-391-6220

www.precorp.coop

Powder River Energy Corporation is an equal opportunity provider and employer.