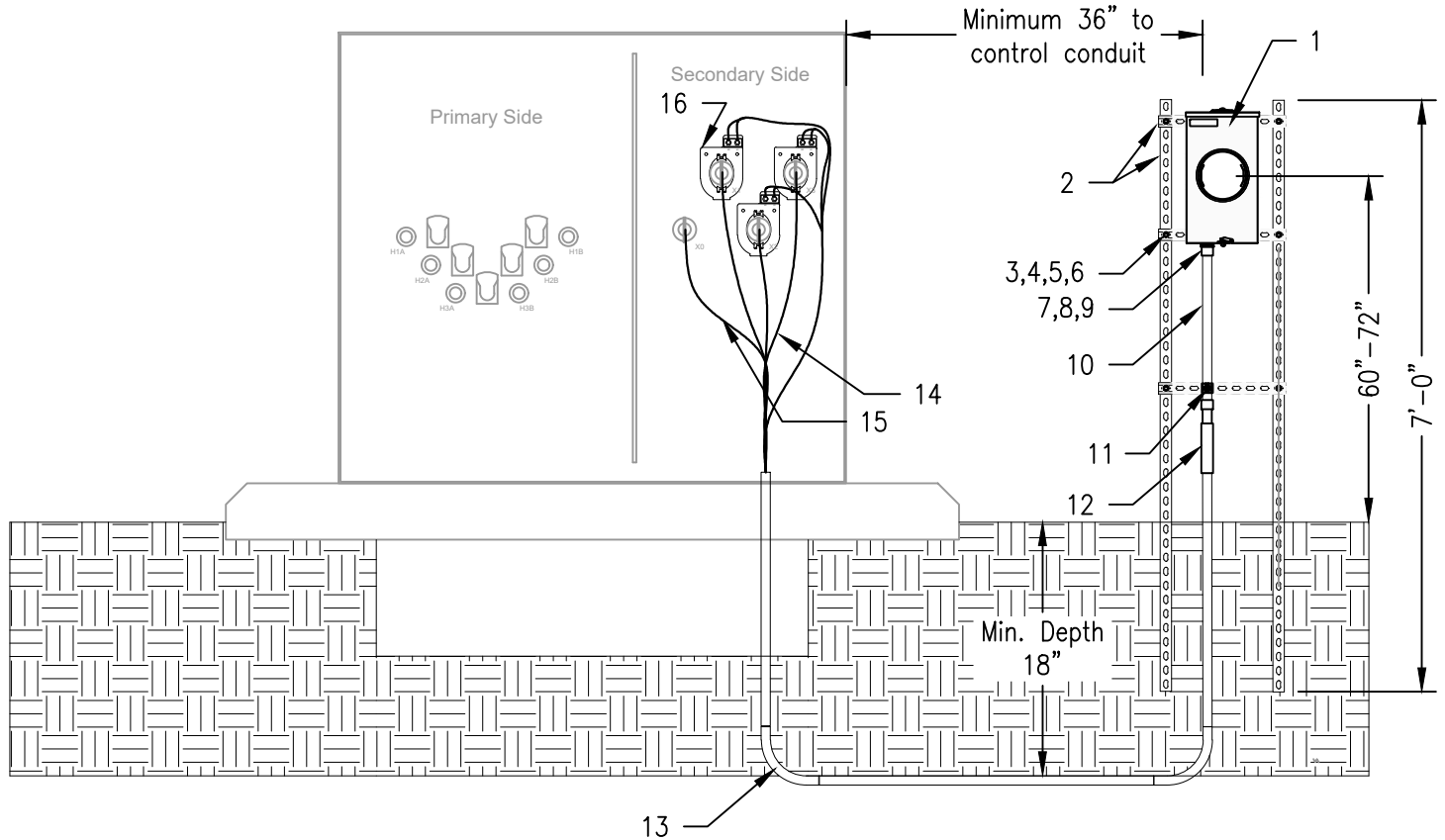


NOTES:

1. Metering Method if meter socket must be mounted free standing, and if over the bushing current transformers (CTs) are used.
2. Transformer will serve a single service.
3. Meter socket must not be attached directly to padmounted transformer.
4. Conduit shall be used for secondary control wires to meter socket.



ITEM	PART #	MATERIAL	QTY
1	9185-13T	13T Meter Socket	1
2	9296	Unistrut, 1" X 1 5/8" x 10"	2
3	9857	Bolt, SS 3/8" X 1"	10
4	9865	Washer, 3/8" Round	10
5	9880	Washer, 3/8" Lock	10
6	9295	Nut, 3/8" Spring	10
7	9801-1	Terminal, 1" PVC Adapter	1
8	9804-1	Locknut, 1" PVC Fitting	1

ITEM	PART #	MATERIAL	QTY
9	9803-1	Bushing, 1" Insulating	1
10	8240-1	Conduit, 1" PVC Sched. 40 As Req'd	
11	9155-1	Clamp, 1" Strut Assy.	1
12	9820-1	Coupling, 1" PVC Expansion	1
13	9834-24	Sweep, 1" 90 deg. PVC Sched. 40	2
14		Wire, #10 AWG Cu	240'
15	3011	Wire, #6 AWG Green	20'
16		Transformer, Current	3

DESIGN PARAMETERS:

1. Member provides secondary cable from transformer to service.
2. Size CTs to service size.
3. 900A Metering for 750kVA 3-Phase Padmounted Transformer.
4. 1200A Metering for 1000kVA 3-Phase Padmounted Transformer.

**120/208V 900 - 2000A Underground
Three Phase 4 Wire Meter On Post Structure
w/ Over the Bushing CTs**

RUS
12/14/2023
REV. 0



**UM8.7-09IR-OB
UM8.7-12IR-OB**