

# PRECorp News

AUGUST 2025

## Basin Electric announces 2026 rate increase

By Tim Velder, PRECorp Marketing Communications

Basin Electric has notified its membership that they will implement a cost of power rate increase starting on January 1, 2026.

Their revenue requirement indicates a double-digit increase is needed to meet the membership's generation and reliability needs over their nine-state footprint.

While the actual increase is still in the preliminary stages, Basin's membership has begun conversations on how to best implement the rate increase which will ultimately be borne by all 141 of Basin's cooperative members and their respective membership.

This announcement follows a 2025 increase that had a member impact between 5% and 6%. The increase is tied to Basin's long-term efforts to increase its electric generation and distribution resources amid rising demand for power in the central and western United States. Basin is projecting substantial growth in energy consumption annually over the next 10 years, which is triggering the need for Basin to invest in new generation resources to meet future energy demands.

"Basin is contractually obligated to provide energy for all their member systems. With that obligation, Basin has to construct or otherwise purchase new energy to meet the demand," said PRECorp CEO Brian Mills. "Pair that with the rising costs we are seeing today on all fronts. Basin has and will continue to hold a long-term perspective as it looks to stabilize our future in the generation market."

PRECorp CEO Brian Mills and other PRECorp staff will

answer questions during a **live telephone town hall meeting on Wednesday, August 27, at 6:30 p.m.**

Mills said the long-term benefits to Basin's members are rate stability as the wholesale power supplier works to control its own generation and pricing structure rather than relying on the volatile electric market to purchase additional energy.

Basin has experienced record-high demand from its diverse membership in recent years, along with sharp increases in energy consumption. This rapid growth in energy use highlights the need to invest in new generation resources to ensure reliable service and long-term rate stability.

Basin, an electric generation and transmission cooperative, is not owned by shareholders. Instead, Basin's member cooperatives hold a financial stake in the company and, therefore, invest through rates and, over time, receive capital credit returns or dividends on those investments.

"We understand any increase impacts every member whether they have high power usage or not. We encourage members to consider PRECorp's variety of programs that help control usage and costs," Mills said.

PRECorp offers Budget Billing, Heat Rates, Energy Audits, prepaid metering, and other arrangements to help members navigate their individual needs.

Call PRECorp Member Service at 1-800-442-3630 with specific questions about the impact on your monthly cost. The [www.precorp.coop](http://www.precorp.coop) website has Rate Increase resources such as rate calculators and programs.

## In This Issue

Page 2: CEO Straight Talk

Page 3: Calendar of events

Page 4: PRECorp Scholarship winners



**BRIAN MILLS,**  
CEO

We are excited to host PRECorp's 80<sup>th</sup> Annual Meeting this month. What a proud moment for this cooperative to celebrate together. Given PRECorp's 80 years of service, it is reasonable to state that there are very few original members still with us. That said, the same seven Cooperative Principles that they used to start this cooperative back then have weathered the test of time. Think back 80 years ago. A majority of us will have to rely on the pictures or stories that have been shared. If you are a generational farmer or rancher, thinking back on how your ancestors made the operation work, it almost seems heroic, what they did. If you have employment elsewhere, the type of work you do today was either non-existent 80 years ago or has radically changed since then. Oh, I suppose between all of us we could think of a handful of jobs that maybe have not been impacted as much in that time, but a rare few.

If you ask the historians what has had the most impact on Rural America in the last 100 years, rural electrification would be their answer as it served as the backbone of all other changes that we enjoy. Rural Electrification was built using the cooperative model and they continued to serve well persevering throughout boom and bust. It is those same seven cooperative principles that you and I are using today to operate our cooperative. They truly are a very strong set of principles to use to operate a business together that provides what has become a necessity.

Thinking back on all the changes, how is it that they have not changed from the beginning and even underpinned such transformative changes over the years. I believe it goes to the selfless spirit that our early settlers shared as they worked together, looked out for one another, and measured success or survival by 'us' rather than 'me'.

I plan to share a little more perspective on this at our upcoming meeting on August 23<sup>rd</sup>. If you have attended an annual meeting before, you know I like to provide an outlook on some

of the things that we see having a bigger impact on our cooperative as well. As you have probably read, Basin power costs are slated to go up and while we don't have much detail yet, I hope to have a clearer picture of what it will look like for us by meeting time and how PRECorp plans to handle it.

Won't you plan to join us? It will be a day full of activity culminating with a concert featuring Ned Ledoux. Little back story, Ned and I played basketball against each other back in high school, he for Kaycee and I for Hulett. We always had intense battles as he was pretty talented on the basketball court. When I shared this with Tim Velder as we planned for the meeting, he dug up some old game recaps just to make sure I was remembering correctly. Below are a couple capsules he found on some of our shared contests. It will be good to see Ned again and enjoy his cowboy-way-of-life music as he shares it with us.

Hope to see you at the meeting!

**From the Casper Star-Tribune archives:  
February 14, 1994:**

• **HULETT 67, KAYCEE 66:** At Kaycee on Saturday, Hulett was up by 4 points and then Kaycee hit a late 3 to bring the margin of victory to one for the Red Devils. The Bucs had battled back from a 17-point halftime deficit.\* Brian Mills had 26 for Hulett, Shane Huseby had 15 and Ryan Wood added 12 points. Kaycee was paced by\* Ned LeDoux with 15, Jerod Thompson with 13 and Wade Ackerson scored 12 points. Source: Jason Humble, Kaycee.

**January 15, 1995:**

■ **KAYCEE 66, HULETT 61:** At Kaycee on Saturday,\* Ned LaDeux scored 26 points to lead the Buckaroos over the Red Devils. J.D. Furnival and S.P. Campbell each added 11.\* Brian Mills led Hulett with 20 points, followed by Justin Lawrence with 17. Source: Milo Warren, Kaycee.

# Events Calendar

The list of PRECorp events includes Board meeting dates, holidays, telephone town hall meetings, and more.

- **Tuesday, August 19** - PRECorp Board of Directors meeting, 9:30 a.m., Gillette
- **Saturday, August 23** - 80<sup>th</sup> PRECorp Annual Meeting, Gillette Cam-Plex
- **Tuesday, August 26** - PRECorp Foundation Board of Directors meeting, 9 a.m., Gillette
- **Wednesday, August 27** - Telephone Town Hall meeting with CEO Brian Mills, 6:30 p.m. Dial 888-886-6602 to participate.
- **Monday, Sept. 1** - Labor Day Holiday, PRECorp offices closed, call 1-888-391-6220 with an outage.
- **Monday, Sept. 8** - PRECorp Foundation Golf Scramble, Golf Club at Devils Tower
- **Tuesday, Sept. 16** - PRECorp Board of Directors meeting, 9:30 a.m., Sheridan
- **Tuesday, Sept. 23** - PRECorp Foundation Board of Directors meeting, 9 a.m., teleconference
- **Tuesday, October 21** - PRECorp Board of Directors meeting, 9:30 a.m., Sundance
- **Tuesday, October 28** - PRECorp Foundation Board of Directors meeting, 9 a.m., Gillette
- **Tuesday, November 11** - Veterans Day Holiday, PRECorp offices closed, call 1-888-391-6220 with an outage.
- **Thursday, November 20** - Lineman Scholarship Raffle drawing and CEO Telephone Town Hall, 6:30 p.m.
- **Thursday, November 27** - Thanksgiving Day Holiday, PRECorp offices closed, call 1-888-391-6220 with an outage.
- **Friday, November 28** - Thanksgiving Day Holiday, PRECorp offices closed, call 1-888-391-6220 with an outage.
- **Wednesday, December 24** - Christmas Eve Holiday, PRECorp offices closed, call 1-888-391-6220 with an outage.
- **Thursday, December 25** - Christmas Day Holiday, PRECorp offices closed, call 1-888-391-6220 with an outage.
- **Thursday, January 1** - New Year's Day Holiday, PRECorp offices closed, call 1-888-391-6220 with an outage.

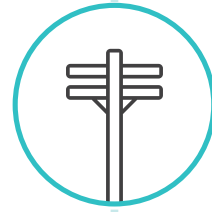
## 4 KEY FACTORS That Impact Energy Bills

You pay for the electricity you consume each month, but there are additional factors that impact your energy bills.



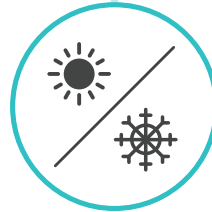
### Fuel Costs

Before electricity can be delivered to your home, it must first be generated at a power plant or from a renewable source. The cost of fuels used to generate electricity fluctuates, which is why you see a power or fuel charge on your monthly bill. This monthly charge covers cost fluctuations without having to continually restructure electricity rates.



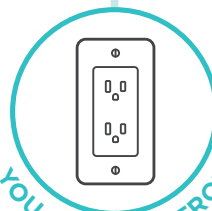
### Service Costs

Your bill includes a monthly service charge, which recovers part of the co-op's ongoing investments in poles, wire, meters, system maintenance and additional costs necessary to provide electric service.



### Weather

When temperatures soar or dip, your cooling or heating equipment must run longer and at maximum capacity, which can greatly increase your energy use. Extreme temperatures can also affect electricity market prices. When the need for electricity increases due to extreme heat or cold, the price of power typically rises.



YOU HAVE CONTROL

### Energy Consumption

This is the amount of electricity you use each month to power your home's cooling/heating system, appliances, lighting, electronics and more. The amount of electricity you consume is measured in kilowatt-hours, or kWh. You have control over how much energy you use, which can ultimately help manage your monthly costs.

# CONGRATULATIONS

## To the 2025 Foundation scholarship program winners.

The PRECorp Scholarship programs awarded more than \$50,000 to college and post-secondary students of members in Campbell, Crook, Johnson, Sheridan, and Weston counties, with dollars from unclaimed Capital Credits, memorials, and funds raised through charitable events. The Powder River Energy Foundation Board of Directors reviews the applications and awards the scholarships to the students pictured below. Apprentice Lineman Scholarship, Basin Scholarship, Geis Memorial, and Rising Opportunity Student Scholarship (ROSS) awardees are also noted.



Ian Andreen  
Clearmont



James Foss  
Buffalo



Macie Geis-Powers  
Sheridan



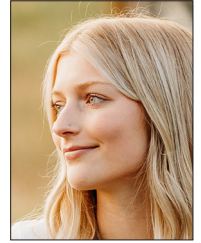
Shannon Gilmartin  
Sundance



Adriana Hostler  
Hulett



Mason Jensen  
Aladdin



Payton LeDoux  
Kaycee



Carter Lembke  
Wright



Jerome Lipp  
Newcastle



LaKacee Lipp  
Newcastle



Rylee Loebe  
Upton



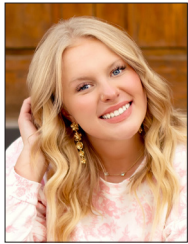
Sophie Louderback  
Upton + ROSS



Lydia Main  
Belle Fourche



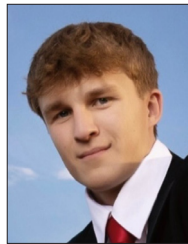
Breeley Materi  
Upton



Mallory Peterson  
Gillette



Risa Pilon, Gillette  
+ Basin Electric



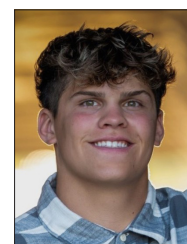
Jacob Schommer  
Sundance



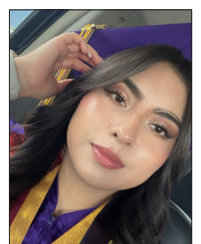
Brayden Terry  
Moorcroft



**Lineman  
Scholarship:**  
Eli Gill, Sundance



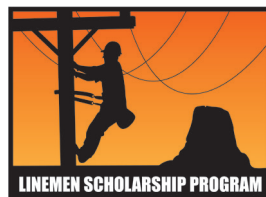
**ROSS Scholarship:**  
Cort Catlin, Gillette



**ROSS Scholarship:**  
Danna Vilchiz, Gillette

### Other recipients not pictured:

**PRECorp:** Caden Hurley, Gillette; **Basin:** Morgan Schell, Gillette, Hannah Steele, Gillette;  
**ROSS:** Alexandria Van Vleet, Wright



**Geis Memorial:**  
Peyton Henderson  
Gillette

Regular business: 1-800-442-3630 Report an outage: 1-888-391-6220

[www.precorp.coop](http://www.precorp.coop)

Powder River Energy Corporation is an equal opportunity provider and employer.