



Keep safety in mind during outdoor excursions

By **Tim Velder, PRECorp**
Marketing Communications

With Wyoming's natural beauty and recreation opportunities, it is easy for residents and visitors to spend down to dusk outdoors.

The time should be enjoyable and worry free - beyond bug bites, skinned knees, and sunburn. PRECorp asks its members to help spread the word about safety around PRECorp power lines and substations.

Oftentimes people encounter our facilities accidentally in their vehicles if they are unfamiliar with their surroundings. Many visitors to this area can stray from established roads in search of adventure, but can also find themselves in places they shouldn't be.

Others are unaware of the dangers of electric shock or electrocution when climbing around underground transformers, power poles or power lines. Sometimes vandals intentionally damage signage, insulators, or substations with gunshots or theft.

We need your help to keep our equipment safe, prevent outages, and protect lives. If you notice anyone causing damage to PRECorp facilities, call your local law enforcement office immediately.

PRECorp crews work very hard in all conditions to provide reliable power, and man-made outages due to accidents or vandalism put linemen at risk, and create unnecessary hardships for our members. Thousands of PRECorp members' dollars are spent every year repairing equipment and power lines that have been damaged by the public. As a not-for-profit cooperative, owned by the members, we all share in this expense. This doesn't even include the inconvenience, damages and hazards to members down the line that require power for medical equipment or other needs while a lineman hunts down the problem.

If you have concerns about unsafe conditions related to power lines, call PRECorp Operations Dispatch at at 1-888-391-6220.

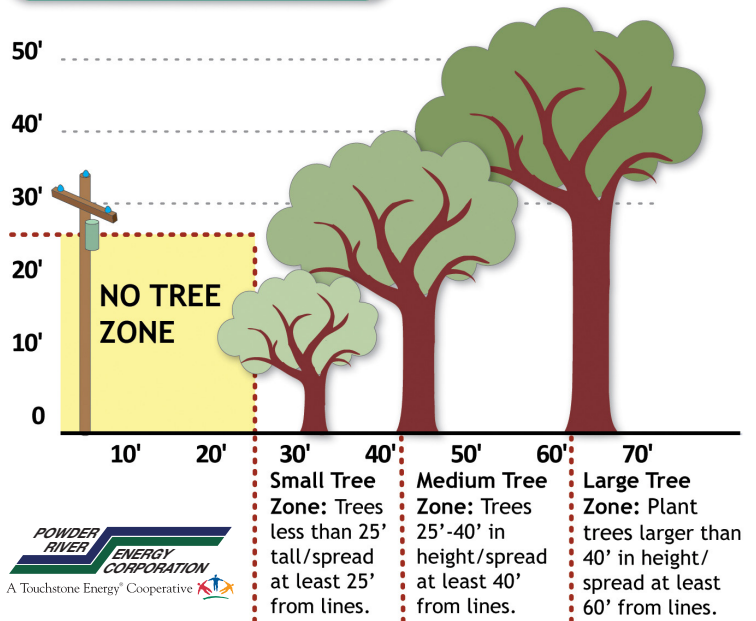
Mind your clearances when planting trees

PRECorp crews are reporting some issues with residential trees growing too close to power lines. Our linemen do not want to cut down - or severely trim - your trees. But if they are posing a danger to a power line or are growing into a line causing power blinks and outages, the chain saw will have to come out.

The best way to avoid the problem is to know the clearance for that tree and its potential canopy. Consult the tree planting guide at the right to know how far away the sapling must be planted to ensure it will be a safe distance from overhead power lines.

Also remember to call 811 before you dig to ensure there are no surprises underground.

Tree Planting Guide



In Operation RoundUp? YOU COULD WIN ANOTHER BUNDLE!

(of meat.)

A great way to close out the summer, Powder River Energy is offering Operation RoundUp® members and new enrollees another chance at a free bundle of bison, beef, and pork, just because you are part of the monthly contribution network to the Powder River Energy Foundation.

If you are currently enrolled in Operation RoundUp® or you sign up before August 31, 2017, you will be entered in a drawing for a bundle of bison, plus 4-H beef and pork totaling 25 pounds. The drawing will be held Friday, September 1.

If you are not a member of Operation RoundUp®, **SIGN UP NOW** by checking the box on your bill, or by calling PRECorp at 1-800-442-3630.